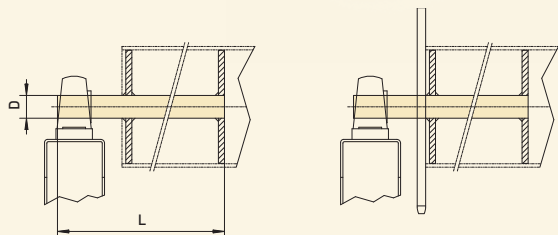
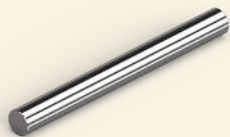


Accessori meccanici

10.1 Perno dell'albero A

Senza chiave

Materiale:
S355J2C+C (N. 1.0579)



Lato cuscinetto

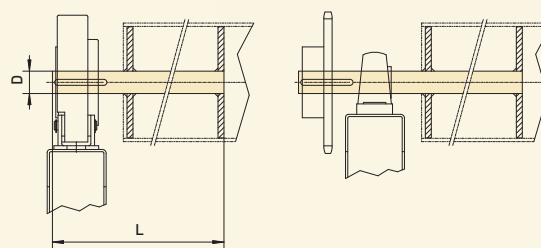
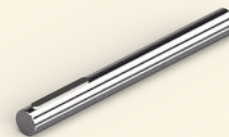
Lato cuscinetto con disco ruota dentata

Ø D	L [mm]	N. d'art.
25	350	40012327
30	600	40012328
40	600	40012329
50	600	40012330
55	600	40012663
60	600	40012331
80	800	40012664
100	980	40017002

10.2 Perno dell'albero B

Con chiave

Materiale:
S355J2C+C (N. 1.0579)



Dispositivo anticaduta

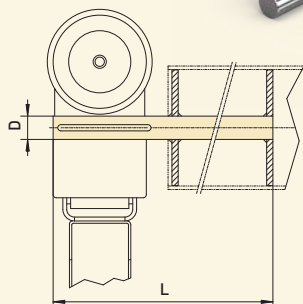
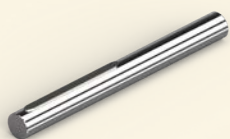
Mozzo ruota dentata e cuscinetto

Ø D	L [mm]	Chiave	N. d'art.
30	600	8 x 7 x 70	30003002
40	600	12 x 8 x 70	30003003
50	600	14 x 9 x 70	30003004
60	600	18 x 11 x 100	30003005
80	800	22 x 14 x 100	30003184

10.3 Perno dell'albero C

Con chiave

Materiale:
S355J2C+C (N. 1.0579)



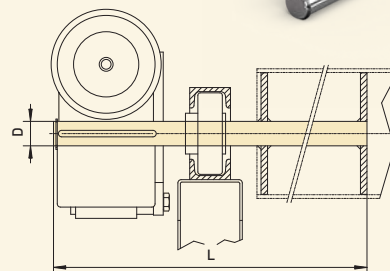
ELEKTROMATEN SI con elemento di fissaggio, SIK con fissaggio oscillante

Ø D	L [mm]	Chiave	N. d'art.
25	350	8 x 7 x 100	30003007
30	600	8 x 7 x 120	30003008
40	600	12 x 8 x 120	30003009
55	600	16 x 10 x 140	30003185
60	600	18 x 11 x 140	30005035
80	800	22 x 14 x 200	30005905
100	980	28 x 16 x 210	30005173

10.4 Perno dell'albero D

Con chiave e anello di sicurezza

Materiale:
S355J2C+C (N. 1.0579)



ELEKTROMATEN SI con elemento di fissaggio, SIK con supporto flottante avvolgimento

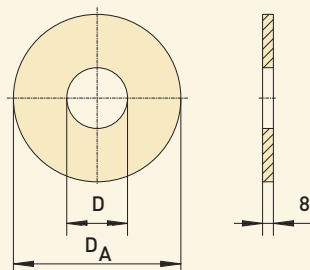
Ø D	L [mm]	Chiave	N. d'art.
30	600	8 x 7 x 120	30003013
40	600	12 x 8 x 120	30003014
55	600	16 x 10 x 140	30003186

Accessori meccanici

11. Dischi



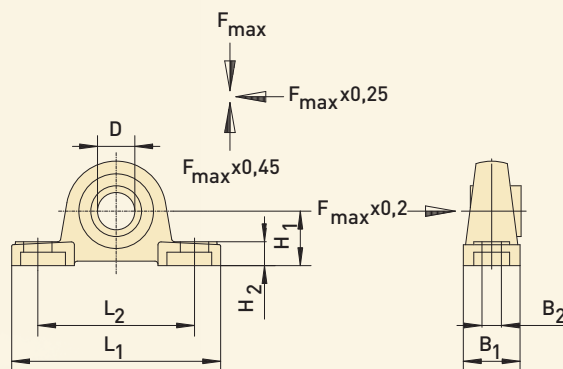
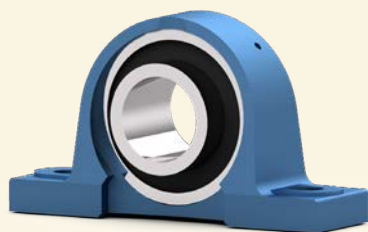
Materiale:
S235JR (N. 1.0038)



D	D _A	Per tubo	N. d'art.
30	99	108,0 x 3,6	40000376
30	124	133,0 x 4,0	40000379
40	124	133,0 x 4,0	40000381
55	124	133,0 x 4,0	40012974
30	149	159,0 x 4,5	40000383
40	149	159,0 x 4,5	40000385
50	149	159,0 x 4,5	40000387
55	149	159,0 x 4,5	40011017
30	166	177,8 x 5,0	40000681
40	166	177,8 x 5,0	40000389
50	166	177,8 x 5,0	40000391
55	166	177,8 x 5,0	40000958
30	182	193,7 x 5,4	40001214
40	182	193,7 x 5,4	40000394
50	182	193,7 x 5,4	40000396
55	182	193,7 x 5,4	40010131
60	182	193,7 x 5,4	40000397
40	206	219,1 x 5,9	40000682
50	206	219,1 x 5,9	40000400
55	206	219,1 x 5,9	40001881
60	206	219,1 x 5,9	40000403
40	231	244,5 x 6,3	40000405
50	231	244,5 x 6,3	40000407
55	231	244,5 x 6,3	40011551
60	231	244,5 x 6,3	40001769
70	231	244,5 x 6,3	40000408
55	259	273,0 x 6,3	40010168
60	259	273,0 x 6,3	40000411
70	259	273,0 x 6,3	40000412
80	259	273,0 x 6,3	40000413
55	283	298,5 x 7,1	40012567
60	283	298,5 x 7,1	40000416
55	308	323,9 x 7,1	40012568
60	308	323,9 x 7,1	40000421
70	308	323,9 x 7,1	40000422
80	308	323,9 x 7,1	40000423

Accessori meccanici

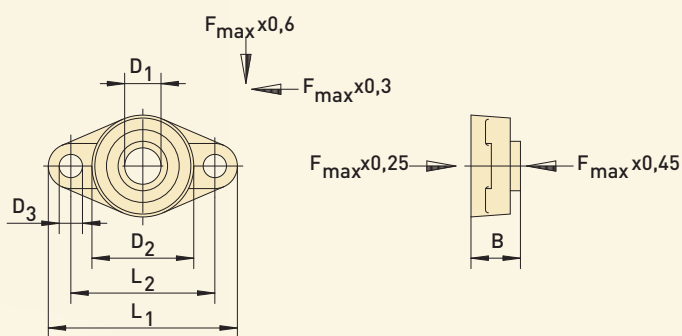
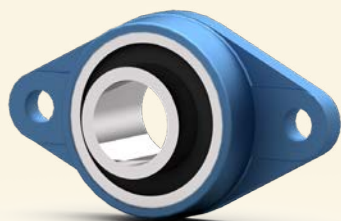
12. Cuscinetto UCP



■ Rispettare il fattore per l'orientamento del carico

D	L1	L2	H1	H2	B1	B2	F _{max} (KN)	N. d'art.
25	140	105	36,5	16	38	13	7,3	40000435
30	165	121	42,9	18	48	17	10,5	40000436
40	184	137	49,2	19	54	17	16,5	40000438
50	206	159	57,2	22	60	20	21,0	40000440
55	219	171	63,5	22	60	20	26,6	40003006
60	241	184	69,8	25	70	20	33,0	40000441
70	266	210	79,4	27	72	25	40,0	40000442
80	292	232	88,9	30	78	25	47,5	40000443
100	490	380	140	55	120	36	135,0	40001531

13. Cuscinetto flangiato

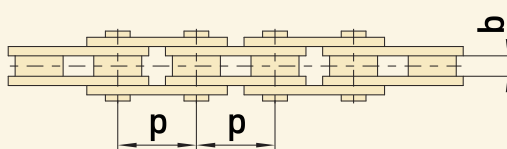


■ Rispettare il fattore per l'orientamento del carico

D1	D2	D3	L1	L2	B	F _{max} (KN)	N. d'art.
25	68	16	130	99	34	7,3	40000425
30	80	16	148	117	38,1	10,5	40000426
40	100	16	175	144	49,2	16,5	40000428
50	115	19	197	157	54,6	21,0	40000430
55	130	19	224	184	58,4	26,6	40012570
60	140	23	250	202	68,7	33,0	40000431
80	180	25	290	233	83,3	47,5	40000433

Accessori meccanici

14. Catene a rulli / Catenaccio

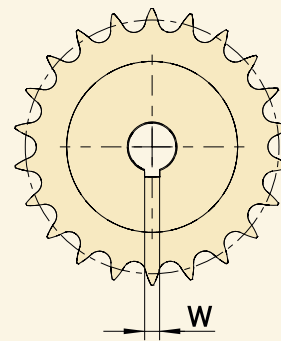
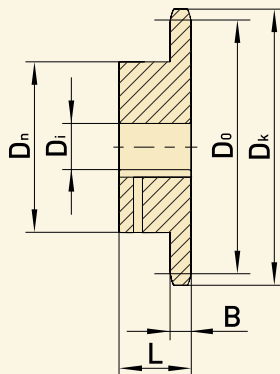


Denominazione	p x b [pollice]	p x b [mm]	Carico di rottura della catena DIN 8187 [N]	Numero denti Kettenrad	Max. M_{ab} [Nm]	Descrizione	N. d'art.
08 B-1	1/2" x 5/16"	12,7 x 7,75	18.000	15 19	90 115	1,5 m 5,0 m Catenaccio	40005050 40017783 40000613
12 B-1	3/4" x 7/16"	19,05 x 11,68	29.000	15 19	220 280	2,0 m 5,0 m Catenaccio	40003030 40013909 40000615
16 B-1	1" x 17,02 mm	25,4 x 17,02	60.000	15 19	610 770	2,5 m 5,0 m Catenaccio	40005049 40013910 40000617
20 B-1	1 1/4" x 3/4"	31,75 x 19,56	95.000	15 19	1200 1520	3,0 m 5,0 m Catenaccio	40014878 40017784 40001111

■ Per le catene o le ruote dentate, sul motoriduttore le coppie ammesse M_{ab} sono le seguenti (considerata sicurezza 6x)

Accessori meccanici

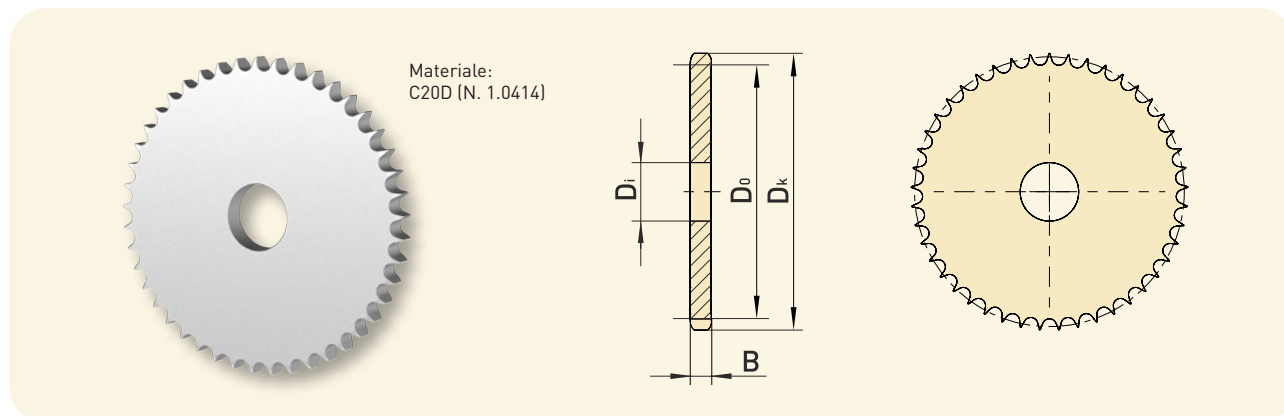
15. Ruote dentate



Numero denti Z	Ø foro D _i [mm]	Ø circonferenza primitiva D ₀ [mm]	Ø D _k [mm]	Ø mozzi D _n [mm]	Larghezza denti B [mm]	Larghezza totale L [mm]	Larghezza della chiave W [mm]	N. d'art.
15.1 Divisione 08 B-1 (1/2" x 5/16")								
15	25	61,1	65,5	45	7,2	28	8	30000237
19	25	77,2	81,7	60	7,2	28	8	30000238
19	25,4	77,2	81,7	60	7,2	28	6,35	30001086
19	31,75	77,2	81,7	60	7,2	28	6,35	30002243
25	25,4	101,3	105,8	60	7,2	28	6,35	30000761
25	31,75	101,3	105,8	60	7,2	28	6,35	30001990
30	30	121,5	126,1	80	7,2	30	8	30000239
30	40	121,5	126,1	80	7,2	30	12	30000406
45	30	182,1	188,0	70	7,2	42	8	30000242
45	40	182,1	188,0	70	7,2	42	12	30000244
57	30	230,5	236,4	70	7,2	42	8	30000245
57	40	230,5	236,4	70	7,2	42	12	30000247
15.2 Divisione 12 B-1 (3/4" x 7/16")								
15	25	91,6	99,8	70	11,1	35	8	30000211
15	30	91,6	99,8	70	11,1	35	8	30000538
15	40	91,6	99,8	70	11,1	35	12	30000219
19	25	115,8	124,2	80	11,1	35	8	30000212
19	30	115,8	124,2	80	11,1	35	8	30000310
19	40	115,8	124,2	80	11,1	35	12	30000220
22	25	133,9	141,8	90	11,1	40	8	30000213
30	40	182,3	190,5	95	11,1	40	12	30000223
30	50	182,3	190,5	95	11,1	40	14	30000224
45	50	273,1	282,5	100	11,1	56	14	30002824
45	60	273,1	282,5	100	11,1	56	18	30002832
57	50	345,8	355,4	100	11,1	56	14	30000234
15.3 Divisione 16 B-1 (1" x 17,02 mm)								
15	40	122,2	133,0	92	16,2	40	12	30000171
15	55	122,2	133,0	92	16,2	40	16	30000173
19	40	154,3	165,2	100	16,2	45	12	30000321
19	50	154,3	165,2	100	16,2	45	14	30000322
19	55	154,3	165,2	100	16,2	45	16	30000688
30	50	243,0	254,0	120	16,2	50	14	30000181
30	60	243,0	254,0	120	16,2	50	18	30002396
45	50	364,1	377,9	125	16,2	70	14	30000184
45	60	364,1	377,9	125	16,2	70	18	30000185
57	50	461,1	474,9	125	16,2	70	14	30000192
57	60	461,1	474,9	125	16,2	70	18	30000193
57	80	461,1	474,9	125	16,2	70	22	30001032
15.4 Divisione 20 B-1 (1 1/4" x 3/4")								
15	50	152,7	167,9	118	18,5	45	14	30002900
15	55	152,7	167,9	118	18,5	45	16	30000920
19	55	192,9	208,1	120	18,5	50	16	30003163
45	60	455,2	470,3	150	18,5	70	18	30003190
45	80	455,2	470,3	150	18,5	70	22	30003191
57	60	576,4	592,3	150	18,5	80	18	30003192
57	80	576,4	592,3	150	18,5	80	22	30003193

Accessori meccanici

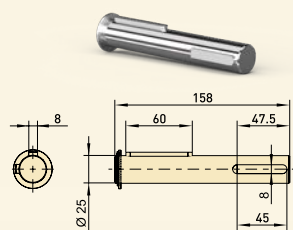
16. Dischi ruota dentata



Numero denti Z	Ø foro D _i [mm]	Ø circonferenza primitiva D ₀ [mm]	Ø D _k [mm]	Larghezza denti B [mm]	N. d'art.
16.1 Divisione 08 B-1 (1/2" x 5/16")					
45	30	182,1	188,0	7,2	40000464
57	30	230,5	236,4	7,2	40000468
57	40	230,5	236,4	7,2	40000470
16.2 Divisione 12 B-1 (3/4" x 7/16")					
45	50	273,1	282,5	11,1	40012557
45	60	273,1	282,5	11,1	40012598
57	50	345,8	355,4	11,1	40000458
16.3 Divisione 16 B-1 (1" x 17,02 mm)					
30	50	243,0	254,0	16,2	40000474
45	50	364,1	377,1	16,2	40000477
45	60	364,1	377,1	16,2	40000478
57	50	461,1	474,0	16,2	40000485
57	60	461,1	474,0	16,2	40000486
57	70	461,1	474,0	16,2	40000487
57	80	461,1	474,0	16,2	40006524
16.4 Divisione 20 B-1 (1 1/4" x 3/4")					
45	60	455,2	470,3	18,5	40012672
45	70	455,2	470,3	18,5	40012709
45	80	455,2	470,3	18,5	40012673
57	60	576,4	591,5	18,5	40006404
57	70	576,4	591,5	18,5	40012710
57	80	576,4	591,5	18,5	40001532

Accessori meccanici

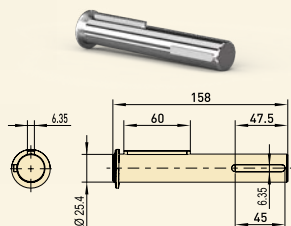
17.1 Alberi scorrevoli



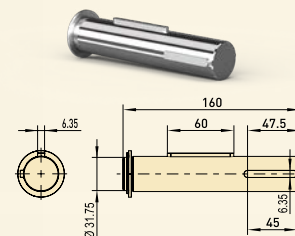
25 N. d'art.
30002596

per serie

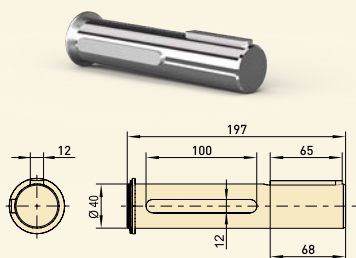
SG50



25.4 N. d'art.
30002628



31.75 N. d'art.
30002699



40 N. d'art.
30002637

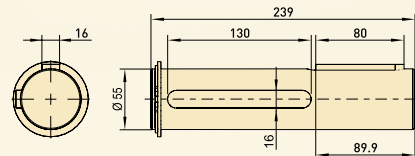
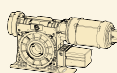
per serie

SG85



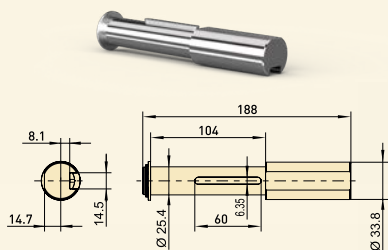
per serie

SG115



55 N. d'art.
30003078

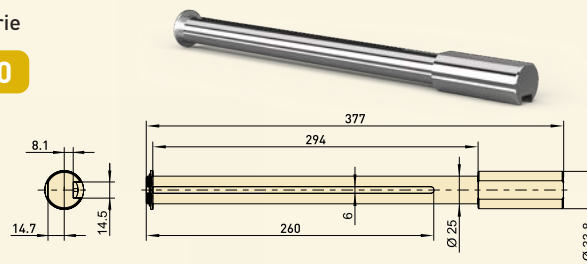
17.2 Alberi di adattamento



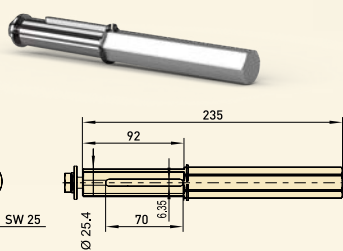
25.4/33.8 N. d'art.
30004619

per serie

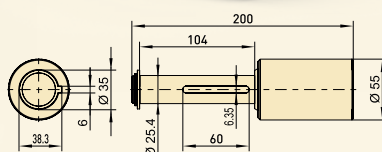
SG50



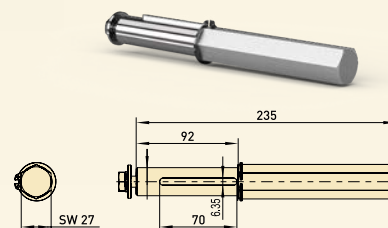
25.4/33.8 N. d'art.
30004710



25.4/SW25 N. d'art.
30004823



25.4/35 N. d'art.
30004630



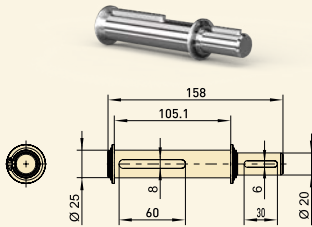
25.4/SW27 N. d'art.
30002125

Accessori meccanici

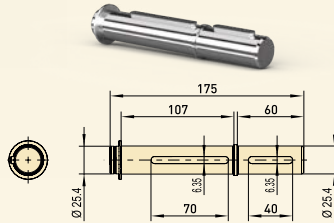
17.3 Alberi scorrevoli di adattamento

per serie

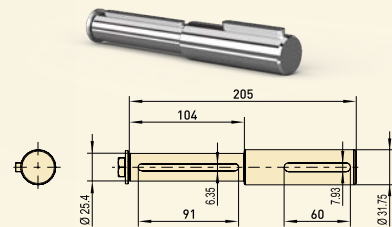
SG50



25/20 N. d'art.
30004845



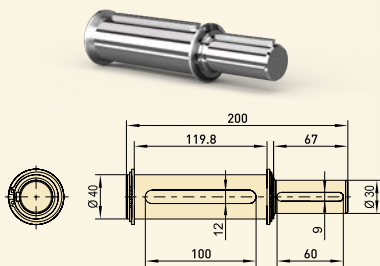
25.4/25.4 N. d'art.
30002691



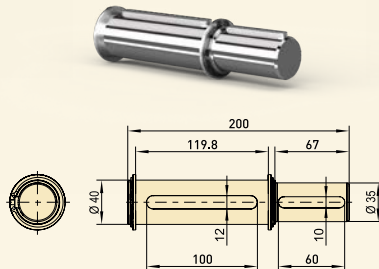
25.4/31.75 N. d'art.
30005146

per serie

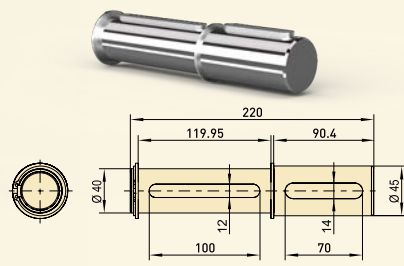
SG85



40/30 N. d'art.
30004436



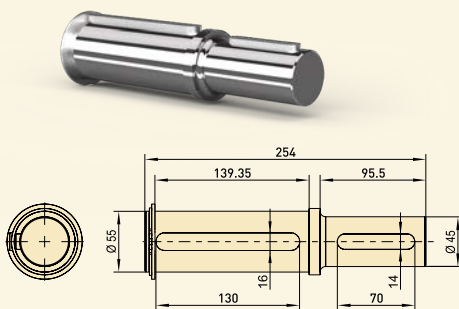
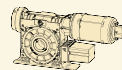
40/35 N. d'art.
30003288



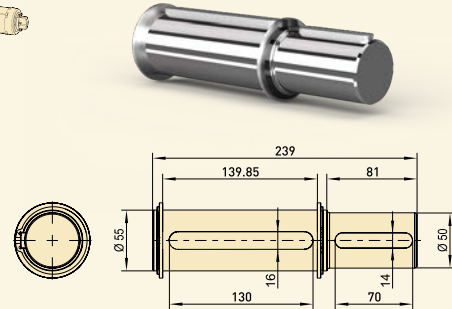
40/45 N. d'art.
30005125

per serie

SG115



55/45 N. d'art.
30003305



55/50 N. d'art.
30004879